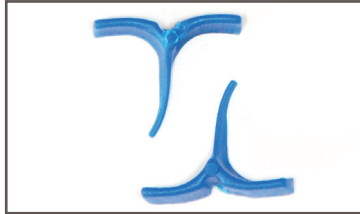


## Instructions:

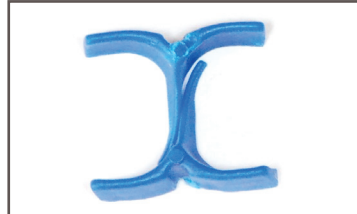
Single use only.

0

### The Concept



1 Note that the opposing sides of the wedge are flat and the side toward band/tooth are biometrically concave



2 The image shows how intimately the wedges "nest" into each other.



3 ABC unique design guards against band-crushing as evidenced in this photo.

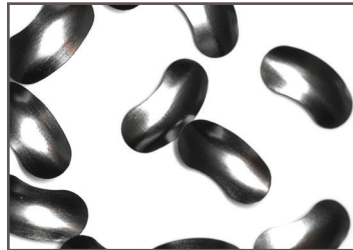
### CASE

1

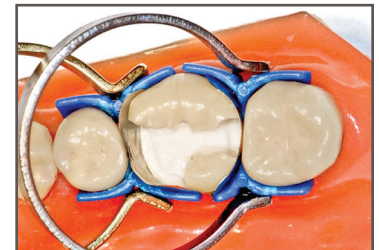
### ABC Wedge with sectional matrices



1 ML cusp missing. Distal box within normal limits.



2 Sectional matrices work well for MOL and DO requirements. (Where the matrix is long enough)



3 Both MegaRings provide separation and stability. Gold is preferred in most situations for perfect alignment.

### CASE

2

### ABC Wedge with Tofflemeier



1 Entire lingual aspect is fractured/decayed off. Tofflemeier is the only option. A Sectional matrix cannot span this length.



2 A full contour Tofflemeier is modified to eliminate buccal overlap.



3 Two gold MegaRings create separation and stability.

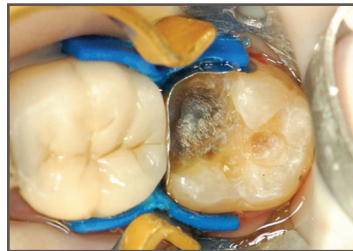
### CASE

3

### ABC Wedge Clinical Case, MOB Composite



1 Failed Amalgam.



2 ABC Wedge supports the matrix.



3 Final restoration.