



# SMALL EQUIPMENT AND DENTAL MATERIALS

**ZD** ZEST DENTAL  
SOLUTIONS®

# CLASS II SOLUTIONS



## Caries Disclosing Dye System **CARIES FINDER™**

### Caries Finder Green

- Recommended when working close to the pulp

### Caries Finder Red

- Complementary system to caries detection devices
- Ideal for minimally-invasive dentistry



## Desensitizing Agents

### **MICROPRIME™ B & G**

- Reduce post-operative sensitivity
- MicroPrime G: HEMA, Glutaraldehyde
- MicroPrime B: HEMA, Benzethonium Chloride, Fluoride
- Available in 10ml bottle and 50 x 0.20ml unit dose (MicroPrime G)



## Sectional Matrix Systems

### **MEGA V™ RING**

- Support placement of restorations that conform to the contour of natural teeth
- Stackable rings with inclined hoop design facilitate optimal separating force
- Durable Nylon tines provide grip and keep the matrix band in place
- The slot dimension of rings supports the use of multiple wedges
- Matrix bands are available in assorted styles including stiff, thin, ultra thin, and subgingival
- Rings are compatible with instruments and wedges from other systems



## Single-Bottle Adhesive

### **PRELUDE ONE™**

- One step application
- For use on most surfaces
- No primer needed
- No post-op sensitivity
- High bond strengths with direct and indirect restorations



## Dual-Cure Bulk Fill Composite

### **bulkez®**

WITH INTELLITEK® TECHNOLOGY

- Base, liner, and final restorative, all-in-one
- Bulk-fill application eliminates multi-layering
- No capping or light-curing required
- Proven Intellitek® Technology stops the gap formation and prevents microleakage
- High strength and wear resistance
- Excellent polishability and high radiopacity



# AIR ABRASION & SANDBLASTING

Conservative Dentistry Without Anesthesia

Air and Hydro Abrasion Systems

## PREPSTART™ & PREPSTART™ H<sub>2</sub>O

- Treat without anesthesia
- Treat upon diagnosis
- Treat multiple quadrants within minutes
- Remove tough stains with ease



Abrasives

## ALUMINUM OXIDE

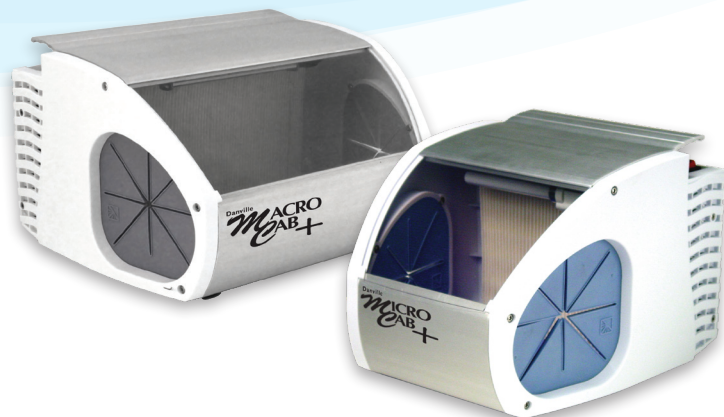
- Available in 27µm, 50µm and 90µm



Intraoral Sandblaster

## MICROETCHER™ IIA

- Precise surface micro-roughening
- Etch metal, composite and amalgam restorations
- Etch orthodontic brackets and bands
- Remove tough stains
- Inclusive of spill resistant abrasive filter



Self-Contained Dust Cabinets

## MACRO CAB+™ & MICRO CAB+™

- Trap sandblast dust and debris



Dental Surface Silicating Powder for Cementation & Repair

## SILJET™

- Repair of ceramic, composite, Zirconia and metal restorations

# COMPOSITES

## FLOWABLE SELECTION CHART

BRAND	VISCOSITY	CLASS	CURING TYPE
StartFlow	low	hybrid	light
StartFill 2B	low	hybrid	dual
Accolade	medium	hybrid	light
Accolade SRO	medium	hybrid	light
Aria	medium	microfill	light



Flowable Composites

### STARTFLOW™

- Low viscosity
- Ideal as a liner in deep restorations



Dual-Cure Composite

### STARTFILL™ 2B

- Low viscosity flowable
- Ideal for luting posts and crowns
- Dentin shade



### ACCOLADE™ SRO

- Medium viscosity
- Super radiopacity of 320%



### ACCOLADE™

- Medium viscosity
- Thixotropic composite adapts readily without slumping



### ARIA™

- Microfill flowable composite
- High polishability



Universal Composite

### PRESTIGE™

- Indicated for all cavity classes, I-V
- Non-sticky formulation
- High translucency



Core Build-Up Composite

### ROCK CORE™

- Core build-up luting agent for composite posts
- A2 and White shades

# ADHESIVES & CEMENTS

Self-Etch, Total Etch & Dual-Cure In One Adhesive System

## PRELUDE™

- Use on dentin, cut/uncut enamel, porcelain and composites
- Consistent and reliable results
- 5µm fill thickness ideal for direct and indirect restorations



## PRELUDE SELF-ETCH KIT

Kit includes: Primer (5ml), Adhesive (5ml), Link (5ml), Accolade Flowable Composite (1g), Mixing Wells (3), Applicator Brushes (40)



## PRELUDE TOTAL-ETCH KIT

Kit includes: Adhesive (5ml), MicroPrime G (5ml), SureEtch (5ml), Etch Tips (12), Mixing Wells (3), Applicator Brushes (40)

Prelude Primer (#1), Prelude Adhesive (#2), Prelude Link (#3)

Available refills: 5ml bottle and 30 x 0.20ml unit doses

Metal, Zirconia, Alumina Primer

## Z-BOND™

- Brush-on single bottle primer for metal, Zirconia, and Alumina



Prehydrolyzed Silane

## S-BOND™

- Prehydrolyzed silane provides bond link to ceramics



Dual-Cure Adhesive Resin Cement

## CEMEZ®

WITH INTELLITEK® TECHNOLOGY



- High bond strength to many substrates, including: porcelain, lithium disilicate and Zirconia
- Compatible with resin-based bonding agents
- Long-term color stability
- Excellent protection from microleakage
- Ideal viscosity for precise placement and trouble-free cleanup after tack-curing
- Simplified technique for Zirconia (no primer needed)



Veneer Placement System

## ACCOLADE™ PV

- Comprehensive kit for bonding veneers
- Simplified procedure for efficient placement
- Accurate shade evaluation with ample try-in time

# IMPRESSION & BITE REGISTRATION MATERIALS

Additional-cure vinyl polysiloxane (VPS) impression and bite registration materials, First Quarter, First Half, and Start VPS, deliver high quality impressions at a fair cost. Three formulations with fast, medium and regular setting times allow dental practitioners address a variety of clinical situations. VPS materials demonstrate high tear strength, superior dimensional stability and are odorless, tasteless (except for Chocolate Mint Monophase and Vanilla Flavored Stiff Bite), and immersible in disinfectants.

## 3 SET TIMES

**1:45**  
Minutes

### Fast Set Impression Material **FIRST QUARTER™**

A super fast set time VPS impression material ideal for smaller, Triple Tray type impressions.

FIRST QUARTER	WORKING TIME AT ROOM TEMPERATURE (23°C)	SETTING TIME INTRAORALLY (35°C)	COLOR
Light Body	<b>30</b> Seconds	<b>1:45</b> Minutes	Purple
Monophase (Chocomint Flavor)			Magenta
Monophase			
Heavy Body			Light Pink

**2:15**  
Minutes

### Medium Set Impression Material **FIRST HALF™**

This impression material is designed for situations that require both speed and more time. Orthodontic Monophase is ideal for single viscosity, full-arch impressions.

FIRST HALF	WORKING TIME AT ROOM TEMPERATURE (23°C)	SETTING TIME INTRAORALLY (35°C)	COLOR
Light Body	<b>1</b> Minute	<b>2:15</b> Minutes	Black
Monophase Ortho			Orange
Heavy Body			Purple
Putty			Lime Green
		<b>3 Minutes</b>	Light Blue

**4**  
Minutes

### Regular Set Impression & Bite Registration Materials **START VPS™**

Offers a variety of viscosities in standard set times, leaving a plenty of working time for multi-unit impressions.

START VPS	WORKING TIME AT ROOM TEMPERATURE (23°C)	SETTING TIME INTRAORALLY (35°C)	COLOR
Ultra Light	<b>2:15</b> Minutes	<b>4</b> Minutes	Teal
Light Body			Dark Pink
Ultra Heavy			Yellow
Heavy Flex			Dark Blue
Heavy Stiff Bite	20 Seconds	1 Minute	Light Blue
Vanilla Stiff Bite			Off White
Clear Bite	25 Seconds	1:30 Minutes	Clear
Alpha Bite	25 Seconds	1 Minute	Blue
Noginate	1:20 Minutes	2:30 Minutes	Tan
Putty	1:25 Minutes	4:30 Minutes	Green



# IVERI® WHITENING

## IVERI AT HOME WHITENING

Includes:

- 4 x 3.5ml Syringes
- 2 Custom Tray Sheets
- 1 Tray Carrying Case
- 1 Teeth Shade Guide
- 1 Instruction Sheet



## IVERI SPEED

- Easy-to-use take-home system
- Formulated with 35% Carbamide Peroxide
- Content includes: 4 x 3.5ml syringes, detachable/reusable tray, and novel LED light



## IVERI ANYWHERE

- Teeth whitening pen
- 36% Carbamide Peroxide



## REFILL SYRINGES

- Refills available in 4 x 3.5ml or 25 x 3.5ml syringes
- Refills do not include EVA Tray Sheets, Carrying Case or Teeth Shade Guide. These items are available in the At Home Introduction Kit only



## IN-OFFICE WHITENING

### EXTRA STRENGTH:

36% Carbamide Peroxide  
+ 6% Hydrogen Peroxide

### REGULAR STRENGTH:

36% Carbamide Peroxide

### ONE OR TWO-20 MINUTE SESSION KITS

EASY, TIME SAVING PREFILLED TRAY

**Strongest** formula available for best results



16% Carbamide Peroxide	4 x 3.5ml Syringes
	25 x 3.5ml Syringes
22% Carbamide Peroxide	4x 3.5ml Syringes
	25 x 3.5ml Syringes
35% Carbamide Peroxide	4 x 3.5ml Syringes
	25 x 3.5ml Syringes
8% Hydrogen Peroxide	4 x 3.5ml Syringes
	25 x 3.5ml Syringes
14% Hydrogen Peroxide	4 x 3.5ml Syringes
	25 x 3.5ml Syringes



Composite Dental Dam

## DAM COOL™

- Protect gingiva during bleaching, sandblasting or air abrasion
- Seal around rubber dams
- Repair torn rubber dams
- Maintain reservoir space for bleaching trays



Single-Use, Disposable Syringe

## MOJO™ II SYRINGE

- Simple 3-position: fill, store, activate
- Minimize material waste
- 18 gauge standard size intraoral tips
- Works with 1:1 cartridge

# TEMPORARY MATERIALS



Temporary Crown & Bridge Material

## TURBOTEMP™ 2 (4:1)

- Defects easily repaired by direct bonding
- Designed for high flexural strength
- Fast intraoral setting time



Temporary Crown & Bridge Material

## TURBOTEMP™ 3 (10:1)

- Excellent physical properties
- Easy to trim
- Optimal esthetics
- Easy to polish

To learn more, please visit

[WWW.ZESTDENT.COM](http://WWW.ZESTDENT.COM) or CALL 800-827-7940



**Zest Dental Solutions**  
2875 Loker Avenue East  
Carlsbad, CA 92010 USA  
[www.zestdent.com](http://www.zestdent.com)

Toll Free: 800.827.7940  
Direct: 1.442.244.4890  
Fax: 1.760.444.4881  
Email: [danvillecs@zestdent.com](mailto:danvillecs@zestdent.com)