

# ENCOMPASS™

**LOCATOR® Secured Overdentures**  
*Guided by NavaGation™*

## EMPOWERED by ENCOMPASS

- Empowers clinicians of all skill levels to produce high-end, highly functional overdentures.
- Expands clinical and financial reach by increasing the number of treatable patients.
- Reduces chairtime by an average of 135 minutes per patient, per procedure.<sup>3</sup>
- Simplifies overdentures by bundling components and processes.
- Streamlines the procedure with the latest in 3D processes.

**ZD ZEST DENTAL**  
SOLUTIONS®

Encompass Overdentures  
Secured by LOCATOR®. Guided by NavaGation™.  
875 Loker Avenue East  
Carlsbad, CA 92010  
USA

800.262.2310  
www.zestdent.com

© Copyright 2021 All Rights Reserved  
L8054 Rev A



DENTURE



IMPLANTS



3-D PRINTING



CLOUD BASED



SURGICAL GUIDE



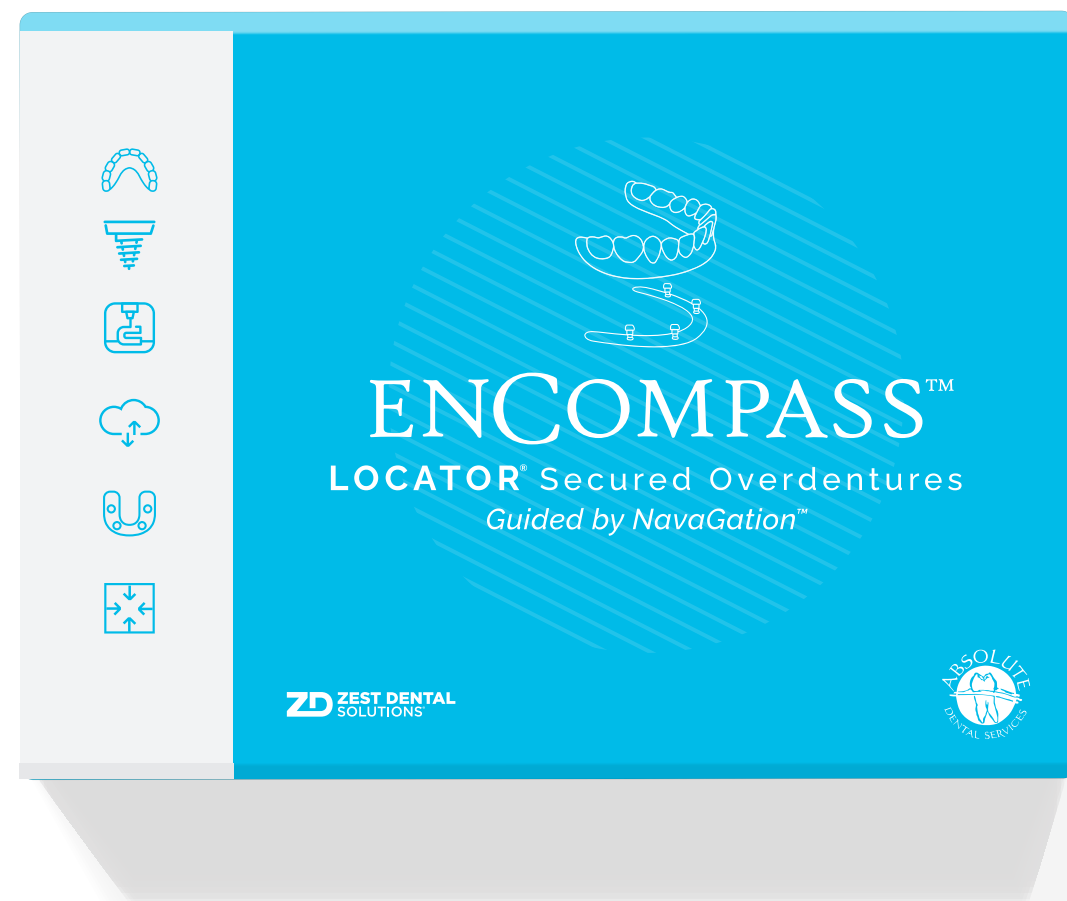
ALL INCLUSIVE

# ENCOMPASSING

Inside the Box Thinking for Exceptional Overdenture Outcomes



**ENCOMPASS™**  
**LOCATOR® Secured Overdentures**  
*Guided by NavaGation™*



## Introducing the All-Encompassing Overdenture Solution

### Create Boutique-Quality Overdentures in Just 2 to 3 Patient Visits

Expand your clinical and financial reach by providing boutique-quality overdentures for edentulous patients. ENCOMPASS is the inclusive way to simplify and streamline overdenture treatment while making it financially accessible for more patients.

ENCOMPASS unites the trusted LOCATOR® name with NavaGation Prosthetic driven case planning by Absolute Dental Services. It uses the latest in 3D fabrication from Carbon® to change the way you treat full-arch restorative cases and elevate your standard of care.

ENCOMPASS includes a Premium Absolute Forever Denture, LOCATOR® implants and abutments, pilot surgical guide, processing materials, plus 3D cloud support. This clinician-friendly solution ensures an exact, comfortable fit right out of the box, even for those with little experience in overdentures.



**DENTURE**

*Absolute Forever Denture™*



## Lifelike aesthetics meets real-life functionality

At the heart of the ENCOMPASS system is a Lucitone 3D Carbon Printed Forever Denture from Absolute Dental Services. This 3D printed denture is 3X stronger than the minimum ISO strength standard for a denture.<sup>1</sup> It's printed on a Carbon® M2 printer for the ultimate in precision, strength, and aesthetics.



*Uniting smile-worthy aesthetics with mastication-suitable strength, the ENCOMPASS denture is made from a heat-activated smart polymer with a linear-elastic fracture toughness of more than 3000 J/m<sup>2</sup>. The IPN® 3D Portrait® teeth from Dentsply Sirona are fused, not bonded, into the base with an innovative FDA-cleared process.<sup>1</sup> The pink tissue is available in 5 different realistic shades and offers patients realistic aesthetics and real-life functionality.*





## CLOUD BASED

*Digitally managed workflows for enhanced efficiency with NavaGation case planning*



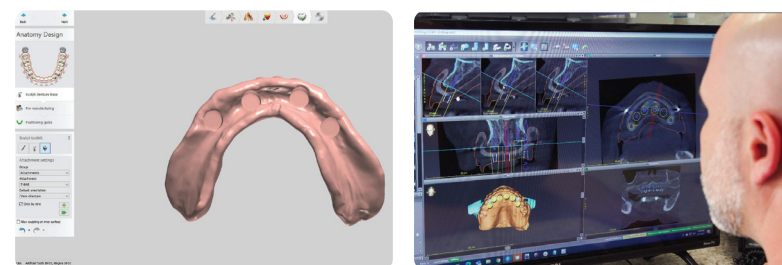
## PILOT SURGICAL GUIDE

*Maintain correct depth and angle placement to better support prosthetic outcome*



## Digital Workflow That Does It All

ENCOMPASS utilizes a fully digital workflow to simplify and streamline the process. It can help reduce the number of patient appointments from 4-6 to 2-3. With ENCOMPASS you can rest easy knowing that all of your digital records are safe and secure. Best of all, there's no on-site IT that needs to be managed.



## Drilling Down Consistency

Guide empowers not just dental surgeons, but dental professionals of all skill levels to place implants with precision, efficacy, and predictability. Whether you're a seasoned surgical professional, a growth-minded GP, or a prosthodontist our digital systems provide a level of consistency that freehand placement can't match. This can help minimize surgical chairtime, increase throughput, and minimize patient discomfort.



*Pilot Guide used during surgery to maintain depth and angle placement.*

### Guided by NavaGation™

The Absolute Dental Lab NavaGation guides clinicians of all experience levels to achieve consistent, repeatable results. Based on the latest in digital surgical technology, each case is planned with a true "tooth down" approach, to enhance efficiency and eliminate costly mistakes.



### Driven by Precision

ENCOMPASS unites the Zest LOCATOR trusted reputation with Absolute Dental Services' unmatched technology. The result is an overdenture that's unrivaled in fit, form and function. Encompass incorporates Premium Absolute Forever Dentures that are printed on Carbon® 3D digital dental printers. This precision digital outcome ensures every arch offers an exact, comfortable fit right out of the box.





## IMPLANTS

*Genuine LOCATOR implants and abutments*

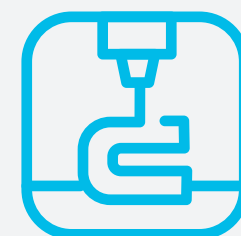


## Globally Trusted, Universally Accepted

The all-in packaging of ENCOMPASS includes 2, 4, or 6 genuine LOCATOR abutments and implants. The implant's progressive diameter design, self-tapping tip and RBM treated surface lets you place the implants with confidence, including in those with narrow and standard ridges. When paired with genuine LOCATOR abutments, they create an unmatched clinical combination.

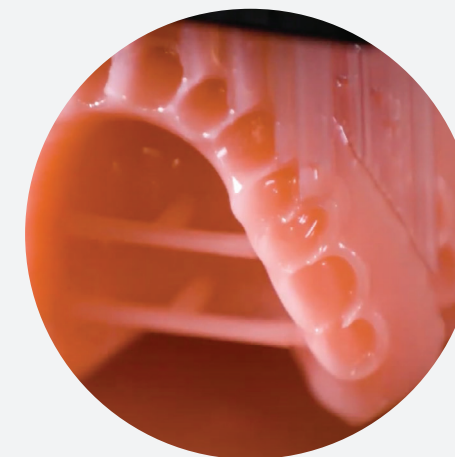






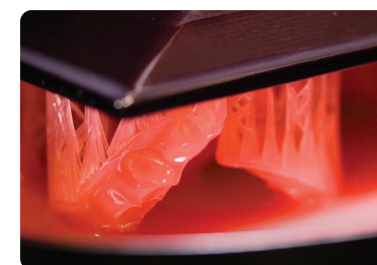
## 3D Printing

*Resins optimized for speed  
and accuracy*



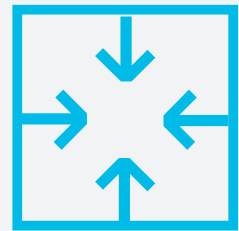
## Based on Carbon® Technology

Transforming dentistry with the power of technology, ENCOMPASS is powered by the Carbon's Digital Light Synthesis™ technology. Using the latest in dental materials and printing technology, the processes are optimized for accuracy and aesthetics.



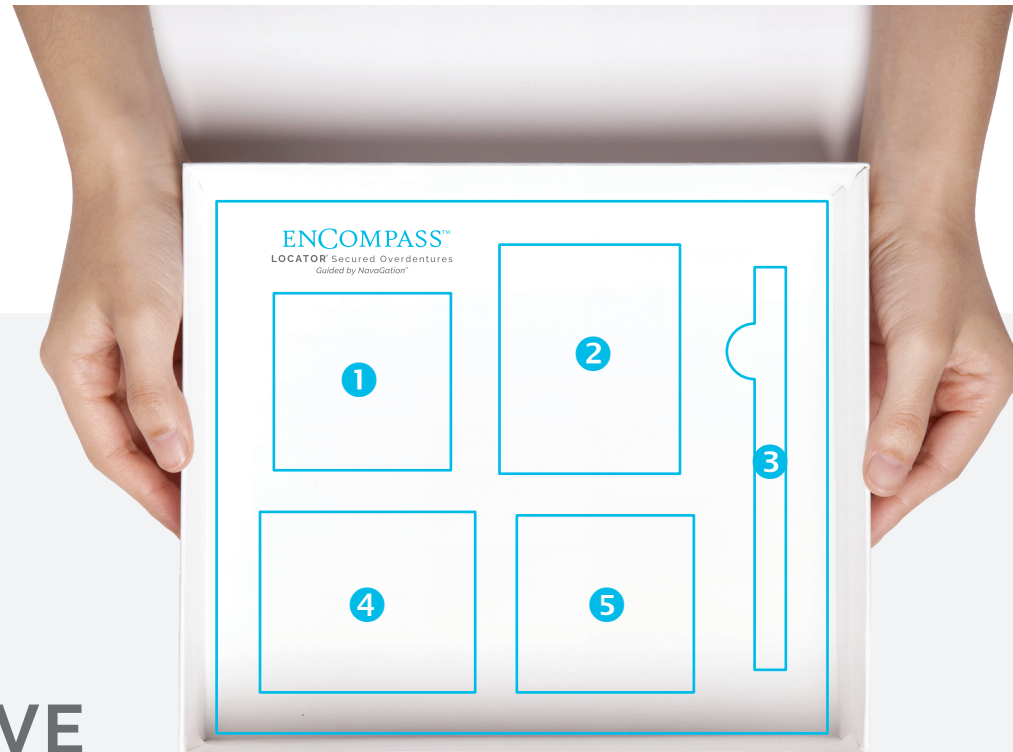
*The recesses for LOCATOR housings are printed into the denture to save chairtime.*





## ALL INCLUSIVE

*Includes everything you need for overdenture procedures in one box.*



- 1 Pilot Surgical Guide and Fixation
- 2 LOCATOR® Implants
- 3 CHAIRSIDE® Patient Denture Removal Tool
- 4 Processing Accessories
- 5 Absolute Forever Denture™



## OVERDENTURE **VS** TRADITIONAL

*The Case for an All-ENCOMPASSING Solution*

## The Confidence of Inclusion

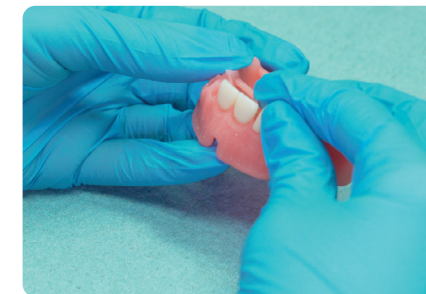
### THE ENCOMPASS BUNDLE INCLUDES:

- NavaGation™ Pilot Guide and Plan
- All-In-One LOCATOR Packaging (2, 4 or 6)
  - LOCATOR Implants
  - LOCATOR Abutments
  - Processing Pack for each implant
- Premium Absolute Forever Denture
- CHAIRSIDE® Attachment Processing Material
- Patient Denture Removal Tool
- CHAIRSIDE® Rubber Finishing Bur
- CHAIRSIDE® Tapered Carbide Bur
- Fixation
- Denture ID microchip

## The Case Against (Traditional) Dentures

Did you know 85% of patients do NOT move forward with overdenture treatment, traditional denture procedures have the lowest patient satisfaction, or complaints about traditional dentures include poor aesthetics, pain during mastication, difficulty speaking, and even problems with gag reflex?<sup>2</sup>

ENCOMPASS overdentures can help patients overcome or eliminate these problems, allowing you to raise and restore their original quality of life for an accessible price.



1. <https://www.absolutedentalservices.com/carbon-3d>  
 2. Data on file.  
 3. Data on file. Individual results may vary.