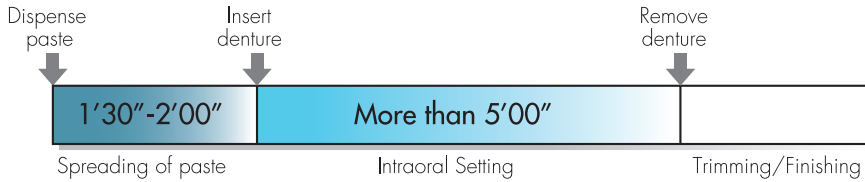
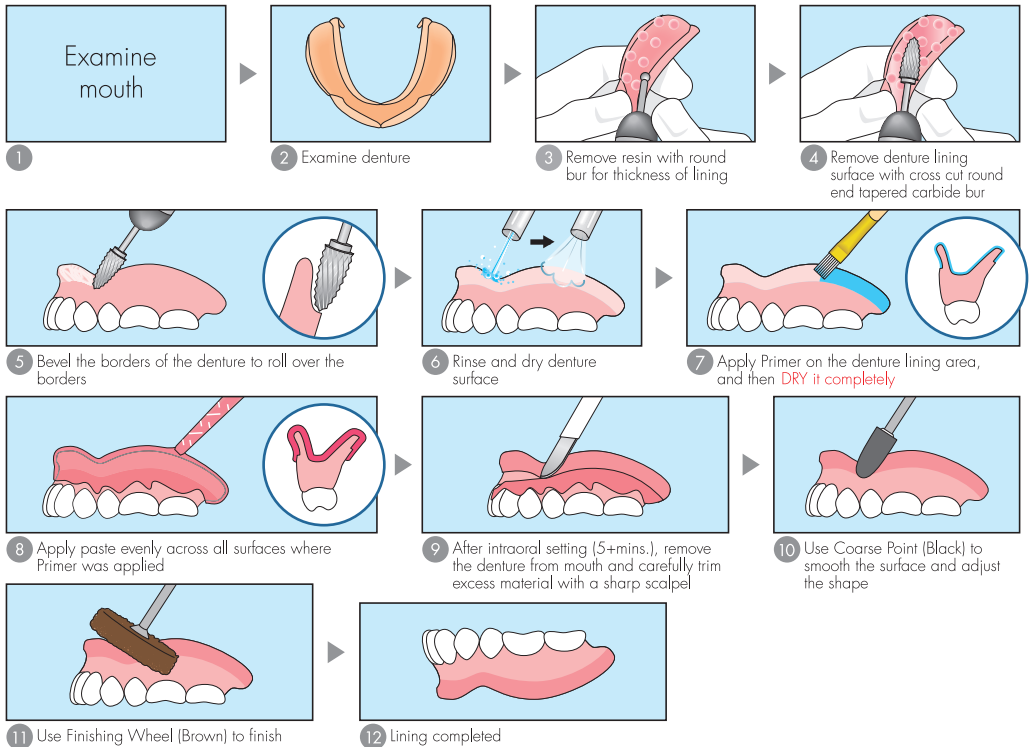


Standard Handling Time



STANDARD PROCEDURE GUIDE



IMPORTANT TIPS

- Primer Application:**
 1. Apply Primer to all surface to be lined thin and evenly.
 2. Confirm the Primer surface is dry. If wet, air dry completely.
- Paste Application:** The paste must be spread evenly across all denture surfaces to be lined prior to insertion to avoid saliva contamination of the primer. Contamination could result in poor adhesion of the lining material to the denture.
- Brush Cleaning:** Clean the brush with alcohol after each use. The use of a contaminated brush could lower the adhesion.

Notes for cleaning the denture and soft lining material (for patient)

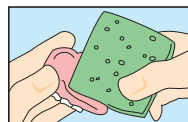
On soft relining

Wipe with a sponge or gauze under running water

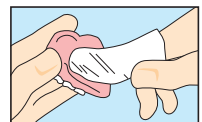
On acrylic resin and teeth

Scrub with denture brush

* Oxygenating denture cleaner is recommended to keep denture clean.

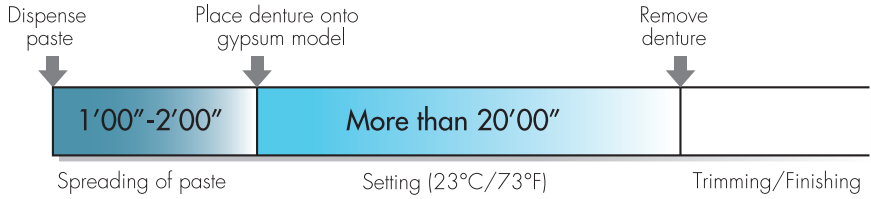


•Sponge

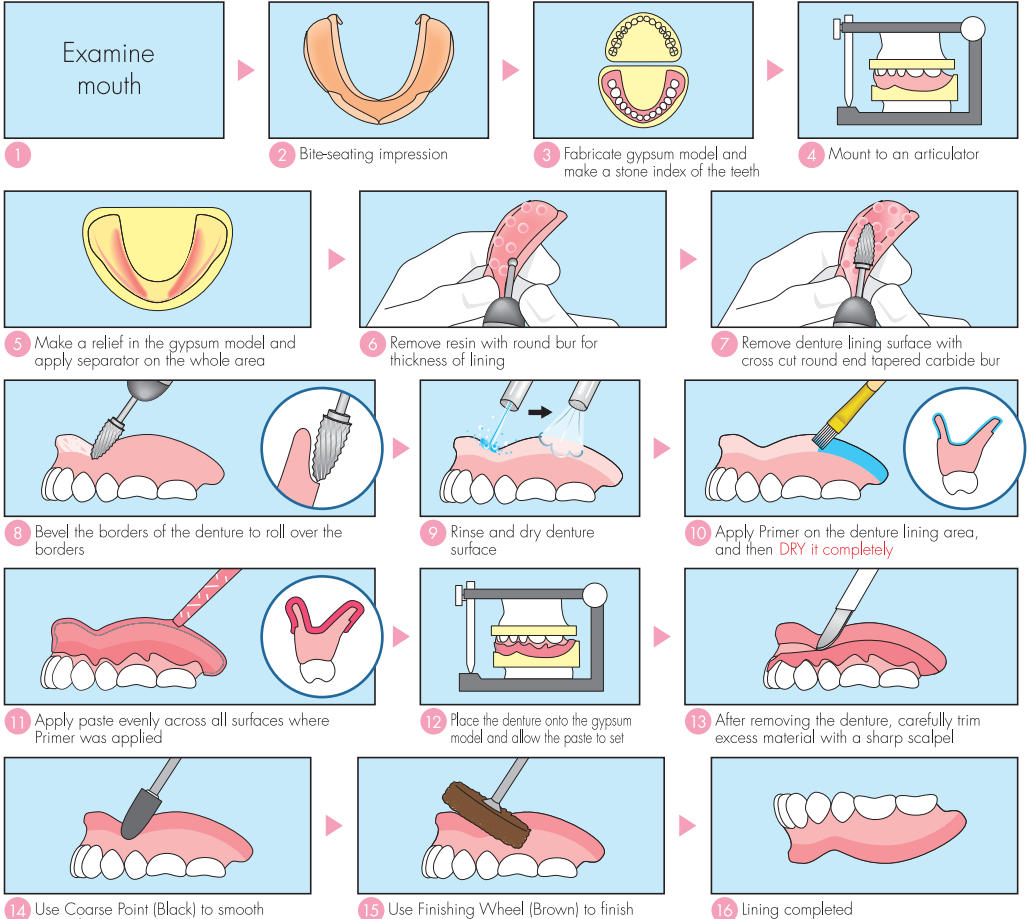


• Gauze

Standard Handling Time



STANDARD PROCEDURE GUIDE



IMPORTANT TIPS

- **Primer Application:**
 1. Apply Primer to all surface to be lined thin and evenly.
 2. Confirm the Primer surface is dry. If wet, air dry completely.
- **Brush Cleaning:** Clean the brush with alcohol after each use. The use of a contaminated brush could lower the adhesion.